

# 600-ACRE NASH COUNTY LAND AUCTION

## SALE, SITE & SERVICES INFORMATION:

- **Terms:** 10% deposit day of sale, balance in 30 days. A 6% Buyer's Premium will be added to determine the total contract purchase price(s).
- **Auction Site:** Gateway Convention Center, 4401 Gateway Center, Rocky Mount, NC (across from Outback Steakhouse)
- **Financing:** Available to qualified buyers through East Carolina Farm Credit, 1100 Eastern Ave., Nashville, NC 27856 – Rick Chilton, Branch Manager (252) 459-3031 or (888) 813-3276
- **Accommodations:** Sale site hotel – Holiday Inn, 651 N. Winstead Ave., Rocky Mount, NC (252) 937-6888 (*Call for special auction rates.*)
- **Airports:** Rocky Mount-Wilson (RWI) – accommodates most private jets, approximately 10 minutes from sale site; Raleigh-Durham International (RDU), most major airlines, approximately 1 hour from Rocky Mount/sale site

## SALE CONTACT INFORMATION:

Stone Auction & Realty (252) 235-2200  
 Tony Stone – Cell (252) 399-9983  
 Ted Stone – Cell (252) 985-8601  
 Jeff Stone – Cell (252) 235-7003

**Sale Conducted By:**

**Stone** Auction & Realty Company  
 YOUR KEY TO SUCCESSFUL SALES  
 Established 1974  
 (252) 235-2200  
 NCAL #561  
 P.O. BOX 250 • 6444 DEANS ST., BAILEY, NC 27807

**NAA** Auctioneer  
**GI** ACC. TO STATE  
 Accredited Auctioneer Real Estate

[www.stone-auction.com](http://www.stone-auction.com)

• *Announcements at auction take precedence over any and all prior advertising.*

*Saturday, March 3, Rocky Mount, NC, 11:00 AM*

SAT, MARCH 3, 11:00 AM  
 Gateway Convention Center, Rocky Mount, NC

Ben H. Neville Heirs  
 NC Hwy. 33 & Watson Seed Farm Road  
 Whitakers, NC

REAL ESTATE AUCTION  
 Nash County  
 600 ACRES OFFERED IN  
 14 TRACTS OR AS A WHOLE!  
 Tracts range from 6.5 acres to 159 acres

[www.stone-auction.com](http://www.stone-auction.com)

**Sale Conducted By:**

**Stone** Auction & Realty Company  
 YOUR KEY TO SUCCESSFUL SALES  
 Established 1974  
 (252) 235-2200  
 NCAL #561  
 P.O. BOX 250 • 6444 DEANS ST., BAILEY, NC 27807

**NAA** Auctioneer  
**GI** ACC. TO STATE  
 Accredited Auctioneer Real Estate

# REAL ESTATE AUCTION Nash County

**600 ACRES OFFERED IN  
 14 TRACTS OR AS A WHOLE!**

Tracts range from 6.5 acres to 159 acres

Ben H. Neville Heirs  
 NC Hwy. 33 & Watson Seed Farm Road  
 Whitakers, NC

**SATURDAY, MARCH 3, 11:00 AM**  
 Gateway Convention Center, Rocky Mount, NC

Farmland – Choice Recreational & Game Lands – Investment Property

- Over a mile of water frontage on North Carolina's famous Fishing Creek!
- Over 1.5 miles of paved road frontage!
- This property is only 25 minutes from NE North Carolina's new entertainment complex; only 20 minutes from Rocky Mount; and less than six miles from I-95!
- Some tracts have timber and some forestlands have been reseeded!



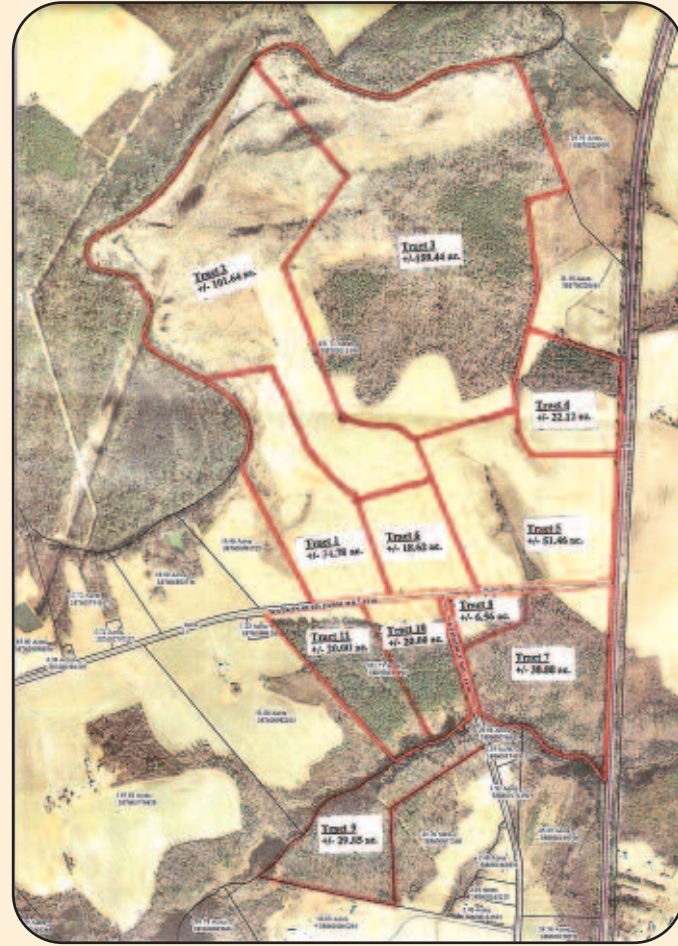
**AUCTIONEER'S NOTES:** This farm has been in the Neville family for three generations. Ben H. Neville, Sr., was a prominent county attorney for Nash County, as well as Nash County Clerk of Court, and a 7th District Court Judge. Population and demographic studies show that the I-95 corridor through eastern North Carolina is expected to be an area of tremendous growth. Don't miss this opportunity to purchase one or all of the parcels of this fine farm.

**Stone Auction & Realty | (252) 235-2200 | [www.stone-auction.com](http://www.stone-auction.com)**



**Farm #1 consists of 504± acres**  
*to be offered in 11 tracts*

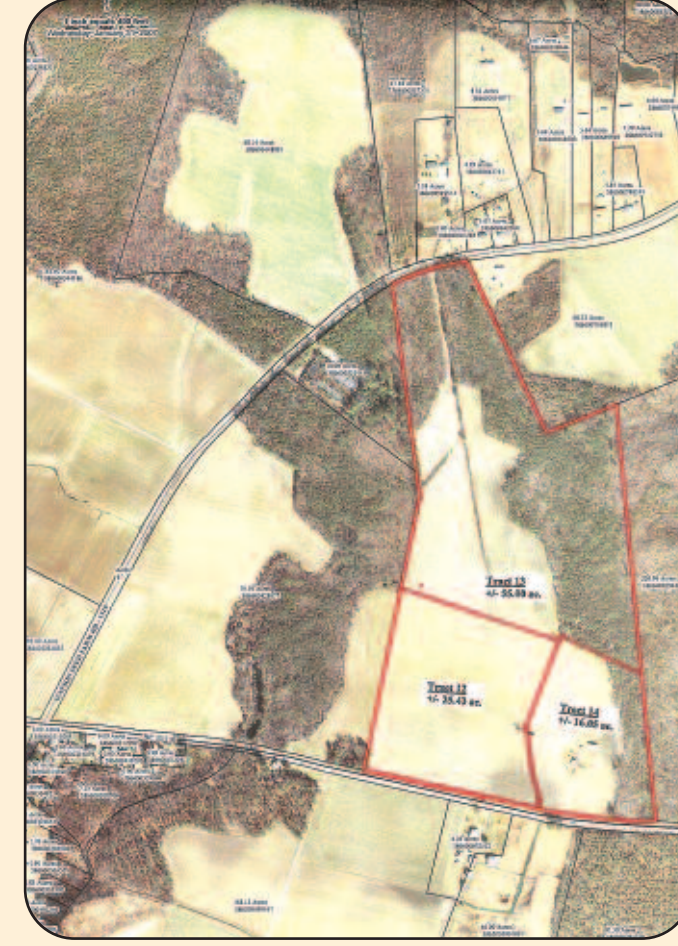
**Farm #2 consists of 96± acres**  
*to be offered in 3 tracts*



**AGENTS ON SITE:**  
 Friday, February 16 & Friday, February 23  
 from 2:00 – 4:00 PM

**Directions to Farm #1:**  
 From interchange of I-95 & NC Hwy 33  
 (Exit 150 at Hickory Meadows Golf Course),  
 take NC 33 east 2 miles to Watson Seed Farm  
 Road (SR 13710), turn left and go 3.5 miles.  
 Farm is on both sides of road.  
**WATCH FOR SIGNS!**

*Maps available on farm sites.  
 Call for private showing.*



**AGENTS ON SITE:**  
 Friday, February 16 & Friday, February 23  
 from 2:00 – 4:00 PM

**Directions to Farm #2:**  
 From interchange of I-95 & NC Hwy 33  
 (Exit 150 at Hickory Meadows Golf Course),  
 take NC 33 east 2.3 miles. Farm is on the left.  
**WATCH FOR SIGNS!**

*Maps available on farm sites.  
 Call for private showing.*

